



Statistics Office  
HM Government of Gibraltar

# Air Traffic Survey 2021







Statistics Office

HM Government of Gibraltar

# AIR TRAFFIC SURVEY 2021



**Statistics Office**  
HM Government of Gibraltar

Statistics Online

Copies of the Air Traffic Survey can be obtained, free of charge from the Statistics Office and are also available for download from the Gibraltar Government Website (<http://www.gibraltar.gov.gi/new/downloads>).

Historical data can be downloaded from previous copies of the report available on-line.

Comments and requests for general information should be addressed to:

Statistics Office  
Suite 3.22 World Trade Center  
6 Bayside Road  
Or  
E-mail: [statistics@gibraltar.gov.gi](mailto:statistics@gibraltar.gov.gi)  
Tel: +350 20075515 / +350 20075490 / +350 20052541  
Fax: +350 20051160



## PREFACE

The Statistics (Air Traffic Survey) Order 1971 requires that the Government Statistician prepare a report and summary of the findings of the Air Traffic Survey to be laid before the Gibraltar Parliament.

This report contains statistical data on air traffic operations between Gibraltar and other destinations for both scheduled and charter airlines for the years 1997 to 2021. It also includes some general data on commercial freight and on the number of flights arriving in Gibraltar.

The impact of the Coronavirus (COVID-19) global pandemic on air traffic is evident throughout 2020 and the earlier part of 2021.

I must express my thanks to the Gibraltar Air Terminal Ltd and Borders and Coastguard Agency for their continued co-operation in the conduct of this Survey.

GOVERNMENT STATISTICIAN



## DEFINITIONS AND NOTES

- (a) Passenger Load Factor: 
$$\frac{\text{All seats used}}{\text{All seats offered (less in-transits)}} \times 100$$
- (b) Revenue Load Factor: 
$$\frac{\text{All seats used by "paying" passengers}}{\text{All seats offered (less in-transits)}} \times 100$$
- (c) Scheduled Flights: are regular flights planned according to a published timetable, including those supplementary thereto, and available for use by members of the public.
- (d) Charter Flights: includes flights carrying 10 or more passengers, other than scheduled services and Ministry of Defence
- (e) In interpreting the figures it should be noted that:
- (i) Flights to and from Manchester re-commenced in September 2008. Flights were suspended between April and June 2020 and between February and April 2021 due to the Coronavirus (Covid-19) global pandemic. Flights resumed in May 2021.
  - (ii) Flights to and from Heathrow re-commenced in October 2009.
  - (iii) Flights to and from Madrid re-commenced in April 2009 and ended in March 2010.
  - (iv) Flights to and from Liverpool commenced in March 2011 and ended in October 2012.
  - (v) Flights to and from East Midlands commenced in March 2012 and ended in September 2012.
  - (vi) Flights to and from Birmingham commenced in March 2013 and ended in October 2017. Flights re-commenced in May 2021 and ended in October 2021.
  - (vii) Flights to and from Marrakech commenced in April 2014 and ended in July 2014.
  - (viii) Flights to and from Tangier commenced in March 2015. Flights to and from Tangier were suspended in April 2020 and did not resume thereafter due to the coronavirus (COVID-19) global pandemic.
  - (ix) Flights to and from Bristol commenced in April 2015. Flights were suspended between April and July 2020 and between February and April 2021 due to the Coronavirus (COVID-19) global pandemic. Flights resumed in May 2021.
  - (x) Monarch Flights to and from Gatwick, Manchester, Luton and Birmingham ceased in October 2017.
  - (xi) Extra flights to and from Gatwick commenced in May 2018 and ended in September 2018. Extra flights restarted in April 2019 to October 2019. Flights to and from Gatwick were suspended between April and June 2020 due to the Coronavirus (COVID-19) global pandemic and resumed in July 2020.
  - (xii) Flights to and from Luton re-commenced in December 2018. Flights were suspended between April and November 2020 due to the Coronavirus (COVID-19) global pandemic. Extra flights to and from Luton commenced in December 2020. Flights were suspended between February and April 2021 due to the Coronavirus (COVID-19) global pandemic. No flights were recorded during August 2021.
  - (xiii) Flights to and from Edinburgh commenced in June 2021.
  - (xiv) Flights to and from Southampton commenced in May 2021 and ended in October 2021.
  - (xv) Flights to and from London City Airport commenced in June 2021 and ended in September 2021.
  - (xvi) Passenger load factors are calculated on the basis of actual figures and exclude passengers on connecting flights when applicable.
  - (xvii) Revenue load factors are calculated in the same way as passenger load factors except they exclude non-paying passengers.
  - (xviii) Charter flights as from 1998 include all destinations. No Charter operations were recorded during 2008, 2011 - 2013.
  - (xix) The yearly totals have been rounded off from the actual figure and need not necessarily equal the sum of the rounded off sub-totals.
  - (xx) Coronavirus (COVID-19) restrictions on air travel are evident during 2020 and the first quarter of 2021, with decreases in air arrivals and departures.



# Contents

Tables		Page
<b>1.</b>	<b>Arrivals and Departures by Air</b>	
1.01	Arrivals/Departures by Air, 1997 - 2021	1
<b>2.</b>	<b>Arrivals by Air (Scheduled Flights)</b>	
2.01	Arrivals by Air from U.K., 1997 - 2000	2
2.02	Arrivals by Air from U.K., 2001 - 2004	2
2.03	Arrivals by Air from U.K., 2005 - 2008	3
2.04	Arrivals by Air from U.K., 2009 - 2012	3
2.05	Arrivals by Air from U.K., 2013 - 2015	4
2.06	Arrivals by Air from U.K., 2016 - 2018	4
2.07	Arrivals by Air from U.K., 2019 - 2021	5
2.08	Arrivals by Air from Spain, 2008 - 2010	6
2.09	Arrivals by Air from Tangier, 2018 - 2021	7
<b>3.</b>	<b>Departures by Air (Scheduled Flights)</b>	
3.01	Departures by Air to U.K., 1997 - 1999	8
3.02	Departures by Air to U.K., 2000 - 2002	8
3.03	Departures by Air to U.K., 2003 - 2005	9
3.04	Departures by Air to U.K., 2006 - 2008	9
3.05	Departures by Air to U.K., 2009 - 2011	10
3.06	Departures by Air to U.K., 2012 - 2014	10
3.07	Departures by Air to U.K., 2015 - 2016	11
3.08	Departures by Air to U.K., 2017 - 2018	11
3.09	Departures by Air to U.K., 2019 - 2021	12
3.10	Departures by Air to Spain, 2008 - 2010	13
3.11	Departures by Air to Tangier, 2018 - 2021	14
<b>4.</b>	<b>Arrivals by Air (Charter Flights)</b>	
4.01	Arrivals by Air, 2006 - 2007, 2009	15
4.02	Arrivals by Air, 2010, 2014 - 2015	15
4.03	Arrivals by Air, 2016 - 2018	16
4.04	Arrivals by Air, 2019 - 2021	16
<b>5.</b>	<b>Departures by Air (Charter Flights)</b>	
5.01	Departures by Air, 2006 - 2007, 2009	17
5.02	Departures by Air, 2010, 2014 - 2015	17
5.03	Departures by Air, 2016 - 2018	18
5.04	Departures by Air, 2019 - 2021	18
<b>6.</b>	<b>Aircraft Arrivals</b>	
6.01	Aircraft Arrivals, 2014 - 2021	19
<b>7.</b>	<b>Commercial Freight</b>	
7.01	Set Down and Picked Up by Air, Gibraltar, 1997 - 2021	20

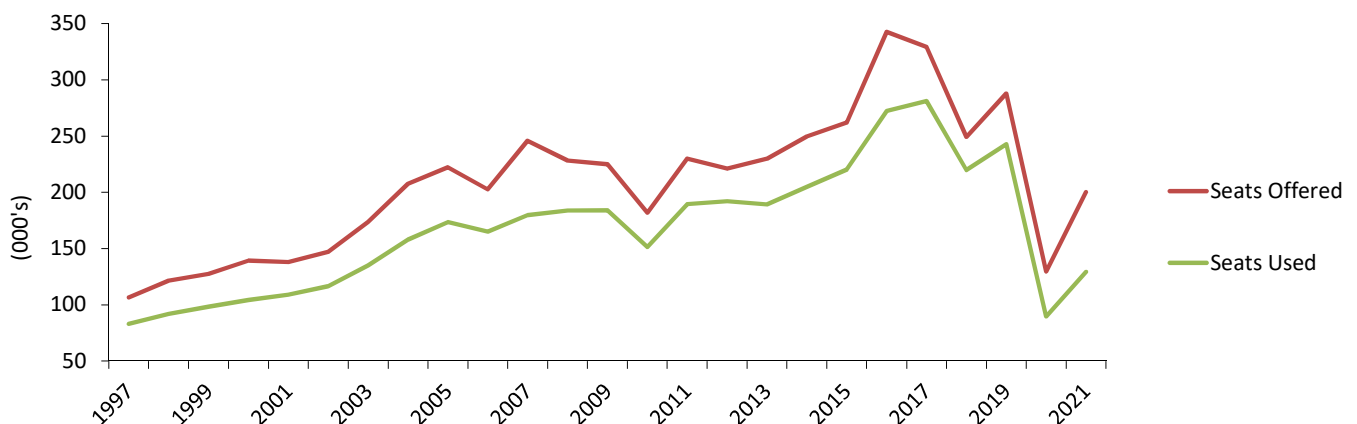


## 1: Arrivals and Departures by Air

**Table 1.01 Arrivals/Departures by Air, 1997 - 2021**

Year	Arrivals (000's)						Departures (000's)					
	Total		Scheduled		Charter		Total		Scheduled		Charter	
	Seats Offered	Seats Used	Seats Offered	Seats Used	Seats Offered	Seats Used	Seats Offered	Seats Used	Seats Offered	Seats Used	Seats Offered	Seats Used
1997	106.6	83.2	106.6	83.2	-	-	104.4	81.5	104.4	81.5	-	-
1998	121.5	92.0	120.4	91.0	1.2	1.1	120.2	91.0	119.0	90.1	1.2	0.9
1999	127.5	98.3	126.5	97.8	1.0	0.5	127.5	97.9	126.5	97.4	1.0	0.5
2000	139.4	104.3	138.6	103.7	0.8	0.5	138.9	107.1	138.1	106.6	0.8	0.5
2001	138.0	109.0	137.7	108.8	0.3	0.2	138.2	110.6	137.9	110.5	0.4	0.2
2002	147.2	116.6	146.3	115.7	0.9	0.9	147.0	114.8	146.1	114.0	0.9	0.9
2003	173.5	135.0	170.3	133.0	3.3	2.0	173.1	134.8	169.8	132.9	3.3	1.9
2004	207.6	157.9	206.4	157.0	1.2	0.9	207.6	158.3	206.4	157.3	1.2	0.9
2005	222.4	173.5	221.6	172.7	0.8	0.8	222.2	174.4	221.4	173.7	0.8	0.7
2006	202.7	165.2	202.0	164.6	0.7	0.6	202.6	166.0	201.9	165.4	0.7	0.6
2007	245.9	179.7	244.1	179.3	1.8	0.5	246.2	181.6	244.3	180.6	1.8	1.0
2008	228.3	183.7	228.3	183.7	-	-	228.3	187.3	228.3	187.3	-	-
2009	225.0	183.9	224.8	183.7	0.2	0.2	224.9	186.2	224.7	186.0	0.2	0.2
2010	181.9	151.5	181.0	151.0	0.8	0.5	182.0	152.7	181.2	152.1	0.8	0.6
2011	230.1	189.5	230.1	189.5	-	-	230.1	193.5	230.1	193.5	-	-
2012	221.0	192.2	221.0	192.2	-	-	221.2	193.6	221.2	193.6	-	-
2013	229.9	189.4	229.9	189.4	-	-	227.6	193.4	227.6	193.4	-	-
2014	249.7	204.9	248.7	204.6	1.0	0.3	249.8	209.4	248.8	209.1	1.0	0.3
2015	262.1	220.2	261.8	220.0	0.3	0.2	262.4	221.7	262.2	221.5	0.3	0.2
2016	342.7	272.2	342.5	272.0	0.2	0.2	342.7	274.9	342.5	274.8	0.2	-
2017	329.2	281.1	329.1	281.0	0.2	0.2	329.2	286.0	329.0	285.8	0.2	0.2
2018	249.2	219.8	248.1	219.7	1.2	0.1	247.7	220.2	246.5	219.7	1.2	0.5
2019	287.8	242.8	286.5	241.9	1.3	0.9	287.5	246.5	286.2	245.5	1.3	0.9
2020	129.7	89.8	126.6	89.1	3.1	0.7	130.2	94.6	126.8	93.4	3.4	1.2
2021	200.3	129.2	195.4	128.0	4.8	1.2	200.5	131.9	195.7	130.8	4.8	1.1

Total Arrivals by Air, 1997 - 2021



## Note:

Coronavirus (COVID-19) restrictions on air travel are evident during 2020 and earlier part of 2021.

## 2: Arrivals by Air (Scheduled Flights)

**Table 2.01 Arrivals by Air from U.K. (Scheduled Flights), 1997 - 2000**

	Seats used (000's)				Seats offered (000's)				Load factor (%)			
	1997	1998	1999	2000	1997	1998	1999	2000	1997	1998	1999	2000
January	4.6	4.8	5.2	4.6	7.9	9.4	8.4	11.1	57.8	51.1	62.5	41.5
February	5.2	6.0	6.3	6.2	6.3	9.0	7.4	9.8	83.0	66.4	84.5	63.6
March	6.1	7.6	8.1	8.7	6.9	9.8	8.8	10.7	87.4	78.1	91.4	81.3
April	5.4	7.8	7.8	9.1	6.6	10.0	9.8	10.4	82.3	77.9	80.4	87.2
May	8.6	9.0	10.0	10.1	9.9	11.4	12.5	13.4	86.4	79.0	80.3	75.9
June	7.6	8.0	9.8	9.7	9.4	10.9	11.8	12.4	80.2	73.6	82.7	78.3
July	8.6	9.3	10.7	10.8	9.5	10.6	12.4	13.4	90.8	87.3	85.8	80.8
August	8.3	9.2	9.2	10.1	10.0	11.2	11.6	12.9	83.4	82.2	79.2	78.1
September	8.1	8.4	8.9	10.5	10.7	10.7	11.8	12.7	75.6	78.0	75.6	82.5
October	8.5	8.2	8.3	10.0	10.4	11.2	11.7	13.4	81.1	73.1	70.3	74.6
November	5.9	6.5	6.5	7.0	9.2	8.4	9.7	9.1	63.7	78.0	67.0	76.2
December	6.4	6.3	7.1	7.0	9.8	7.9	10.6	9.3	65.8	79.7	66.9	75.0
<b>Total</b>	<b>83.2</b>	<b>91.0</b>	<b>97.8</b>	<b>103.7</b>	<b>106.6</b>	<b>120.4</b>	<b>126.5</b>	<b>138.6</b>	<b>78.0</b>	<b>75.6</b>	<b>77.3</b>	<b>74.9</b>

**Table 2.02 Arrivals by Air from U.K. (Scheduled Flights), 2001 - 2004**

	Seats used (000's)				Seats offered (000's)				Load factor (%)			
	2001	2002	2003	2004	2001	2002	2003	2004	2001	2002	2003	2004
January	5.4	5.5	6.5	7.5	9.4	9.3	11.4	12.4	57.3	59.6	57.4	60.0
February	6.9	7.6	7.9	9.2	8.3	8.9	9.3	11.9	82.7	85.9	84.8	77.8
March	8.6	10.2	10.3	12.4	9.8	11.7	13.2	15.4	87.9	87.4	78.2	80.7
April	9.0	8.0	11.0	12.9	10.6	10.7	13.2	16.7	84.5	75.2	82.9	77.0
May	11.1	10.4	13.0	14.0	13.2	14.1	16.1	20.2	83.6	73.8	80.9	69.3
June	11.0	10.4	12.2	14.3	12.8	13.3	15.6	19.5	85.7	78.3	78.6	73.4
July	11.7	13.2	14.6	17.5	13.5	14.6	16.1	20.1	86.6	90.4	90.6	87.2
August	10.5	12.2	13.2	16.2	13.4	14.3	16.1	20.2	78.3	85.5	81.8	80.4
September	10.2	11.4	12.0	15.5	12.8	13.6	15.5	19.6	79.5	83.6	77.2	79.0
October	9.5	11.0	12.3	14.3	13.4	14.4	15.9	20.3	70.9	76.4	77.5	70.6
November	7.5	8.0	10.2	11.7	10.6	10.7	14.1	15.2	71.1	74.7	71.9	76.8
December	7.5	7.6	9.8	11.6	9.7	10.7	13.8	15.0	76.5	71.4	71.3	77.0
<b>Total</b>	<b>108.8</b>	<b>115.7</b>	<b>133.0</b>	<b>157.0</b>	<b>137.7</b>	<b>146.3</b>	<b>170.3</b>	<b>206.4</b>	<b>79.0</b>	<b>79.1</b>	<b>78.1</b>	<b>76.1</b>



## 2: Arrivals by Air (Scheduled Flights)

**Table 2.03 Arrivals by Air from U.K. (Scheduled Flights), 2005 - 2008**

	Seats used (000's)				Seats offered (000's)				Load factor (%)			
	2005	2006	2007	2008	2005	2006	2007	2008	2005	2006	2007	2008
January	10.0	9.7	7.8	9.0	15.9	15.5	11.4	13.0	62.7	62.7	68.7	69.4
February	10.5	10.7	7.8	8.6	14.4	14.8	10.8	10.4	73.2	72.5	72.3	83.2
March	13.4	14.6	9.6	11.3	16.6	17.6	12.7	12.3	80.7	83.3	75.4	91.2
April	13.9	15.2	11.1	15.1	17.6	17.8	14.0	18.3	78.9	85.2	79.6	82.8
May	16.0	17.1	13.7	16.8	21.1	19.3	16.8	19.4	75.8	88.6	81.1	86.8
June	16.2	16.8	13.4	15.8	20.4	19.8	16.4	18.9	79.7	84.9	81.7	83.4
July	18.4	17.9	15.5	19.4	21.1	19.6	16.9	21.4	87.4	91.2	91.7	90.6
August	18.2	14.4	13.4	18.1	21.2	17.4	16.4	21.3	85.8	82.9	81.7	85.2
September	17.0	13.9	14.1	17.7	20.5	17.6	16.4	22.2	83.3	79.0	85.9	79.7
October	16.4	13.8	14.1	18.1	20.9	17.4	17.0	22.2	78.4	79.5	82.5	81.1
November	11.5	9.8	11.2	13.9	16.7	11.7	13.2	19.4	69.0	83.7	84.7	71.7
December	11.1	10.7	10.5	15.2	15.3	13.6	12.7	18.7	72.7	78.8	82.6	81.2
<b>Total</b>	<b>172.7</b>	<b>164.6</b>	<b>142.1</b>	<b>179.0</b>	<b>221.6</b>	<b>202.0</b>	<b>174.8</b>	<b>217.5</b>	<b>77.9</b>	<b>81.5</b>	<b>81.3</b>	<b>82.3</b>

**Table 2.04 Arrivals by Air from U.K. (Scheduled Flights), 2009 - 2012**

	Seats used (000's)				Seats offered (000's)				Load factor (%)			
	2009	2010	2011	2012	2009	2010	2011	2012	2009	2010	2011	2012
January	10.9	9.0	9.1	11.4	15.6	13.0	14.0	15.8	69.8	69.1	65.4	72.3
February	12.2	9.5	10.1	12.9	15.5	11.6	13.4	15.0	79.1	81.5	75.0	86.4
March	16.1	12.1	12.8	15.9	18.7	14.0	16.1	17.0	86.5	86.3	79.8	93.4
April	16.3	9.7	15.3	16.2	19.3	11.5	18.5	20.2	84.7	84.4	83.0	80.1
May	17.0	13.4	17.1	16.9	18.8	15.7	21.3	19.1	90.3	85.0	80.5	88.8
June	17.0	14.2	18.2	18.3	18.5	15.7	22.3	20.1	92.0	90.6	81.8	90.9
July	17.7	15.1	21.5	20.8	19.1	16.2	23.9	21.9	92.9	93.3	89.9	95.3
August	16.3	14.9	21.5	19.8	18.8	16.2	24.1	21.7	86.8	91.6	89.2	91.1
September	15.9	14.4	18.8	17.4	18.4	16.4	22.4	19.7	86.3	87.6	84.0	88.4
October	15.6	15.1	17.1	17.1	18.4	18.2	20.8	19.7	84.7	83.0	82.4	87.0
November	11.1	11.9	13.8	12.1	14.1	15.6	16.8	15.0	79.1	76.2	82.2	80.6
December	10.6	10.9	14.1	13.4	13.1	13.7	16.7	16.0	80.8	79.2	84.5	83.7
<b>Total</b>	<b>176.8</b>	<b>150.1</b>	<b>189.5</b>	<b>192.2</b>	<b>208.1</b>	<b>178.0</b>	<b>230.1</b>	<b>221.0</b>	<b>84.9</b>	<b>84.3</b>	<b>82.4</b>	<b>86.9</b>

## 2: Arrivals by Air (Scheduled Flights)

**Table 2.05 Arrivals by Air from U.K. (Scheduled Flights), 2013 - 2015**

	Seats used (000's)			Seats offered (000's)			Load factor (%)		
	2013	2014	2015	2013	2014	2015	2013	2014	2015
January	8.9	12.2	11.4	13.5	18.3	16.3	66.1	66.4	70.1
February	12.0	13.4	12.5	13.8	17.6	15.4	86.6	76.4	80.7
March	14.8	16.6	16.3	16.3	19.7	17.7	90.6	84.1	92.0
April	13.6	16.5	16.4	17.4	19.5	19.4	78.1	84.8	84.3
May	16.6	17.3	20.1	19.5	20.4	22.9	85.0	84.9	87.9
June	18.0	17.8	20.9	20.7	21.2	23.7	87.1	84.0	88.1
July	21.1	21.3	24.2	23.0	23.8	25.2	91.6	89.6	96.1
August	19.7	20.9	22.8	22.7	24.4	25.7	86.7	85.7	88.8
September	18.6	19.3	21.3	22.8	23.3	24.6	81.7	83.0	86.4
October	17.5	19.2	20.7	22.3	22.2	24.9	78.4	86.6	83.0
November	14.0	14.4	15.6	19.0	19.5	20.5	73.9	73.9	75.9
December	14.6	15.6	16.7	18.9	18.9	19.9	77.4	82.7	83.9
<b>Total</b>	<b>189.4</b>	<b>204.6</b>	<b>218.7</b>	<b>229.9</b>	<b>248.7</b>	<b>256.2</b>	<b>82.4</b>	<b>82.3</b>	<b>85.4</b>

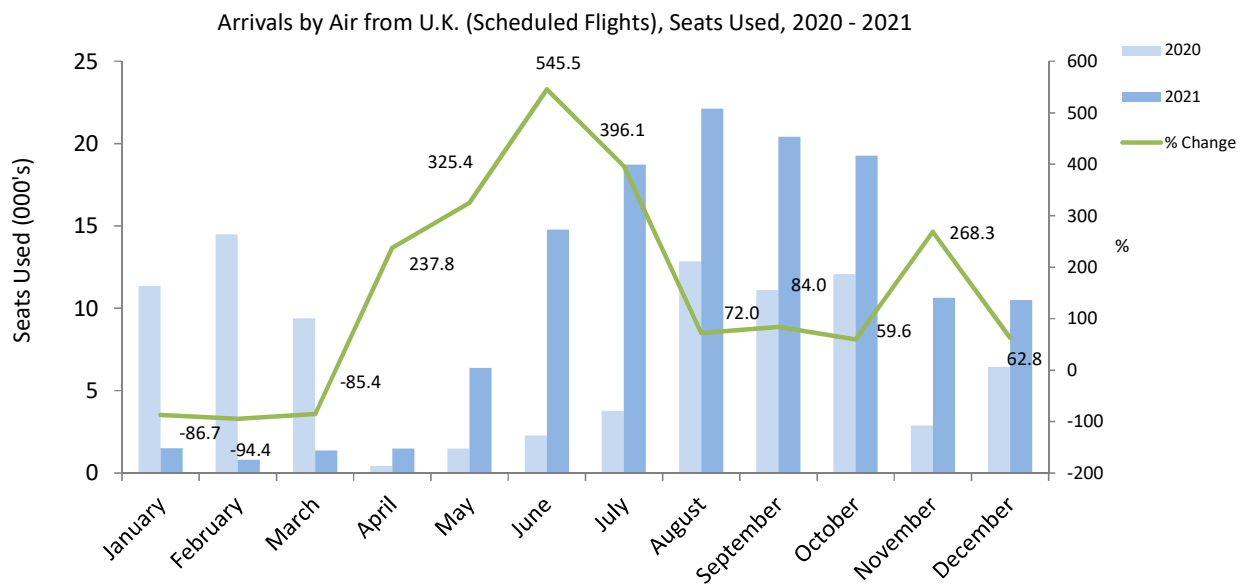
**Table 2.06 Arrivals by Air from U.K. (Scheduled Flights), 2016 - 2018**

	Seats used (000's)			Seats offered (000's)			Load factor (%)		
	2016	2017	2018	2016	2017	2018	2016	2017	2018
January	13.3	14.7	10.2	19.4	22.2	12.0	68.6	66.0	85.1
February	15.1	17.9	12.5	18.9	22.0	13.7	80.0	81.6	90.8
March	20.5	23.0	14.7	23.5	27.1	15.7	87.1	84.9	93.7
April	19.9	27.5	18.3	25.8	32.7	20.4	77.2	84.0	89.7
May	25.5	29.2	20.4	31.6	32.6	21.0	80.7	89.8	97.3
June	24.8	27.9	22.1	30.7	32.1	23.5	80.7	86.9	94.1
July	30.5	32.6	24.1	34.6	35.3	25.2	88.0	92.4	95.7
August	29.0	31.2	23.4	35.3	35.3	25.8	82.1	88.6	90.5
September	26.7	29.6	22.2	33.0	34.3	25.0	81.0	86.2	88.8
October	25.0	19.1	18.5	32.6	21.1	21.0	76.8	90.4	87.9
November	18.6	12.4	14.4	24.7	13.6	18.3	75.3	90.9	78.9
December	21.2	12.7	16.4	25.3	13.5	19.6	83.7	93.6	83.9
<b>Total</b>	<b>270.1</b>	<b>277.8</b>	<b>217.1</b>	<b>335.4</b>	<b>321.9</b>	<b>241.1</b>	<b>80.5</b>	<b>86.3</b>	<b>90.0</b>

2: Arrivals by Air (Scheduled Flights)

**Table 2.07 Arrivals by Air from U.K. (Scheduled Flights), 2019 - 2021**

	Seats used (000's)			Seats offered (000's)			Load factor (%)		
	2019	2020	2021	2019	2020	2021	2019	2020	2021
January	12.1	11.4	1.5	16.7	13.7	4.5	72.2	83.0	33.8
February	14.9	14.5	0.8	18.0	16.0	1.8	82.6	90.9	45.8
March	17.9	9.4	1.4	20.3	13.7	2.4	88.5	68.6	57.5
April	20.6	0.4	1.5	24.7	2.6	3.4	83.6	16.9	43.7
May	24.6	1.5	6.4	28.3	3.0	9.8	87.0	49.3	65.4
June	23.9	2.3	14.8	27.6	2.9	22.3	86.5	78.6	66.2
July	25.0	3.8	18.7	27.7	4.5	30.0	90.2	83.9	62.5
August	25.2	12.9	22.1	28.6	19.2	33.0	88.0	66.9	67.1
September	24.1	11.1	20.4	27.9	17.9	30.9	86.2	62.0	66.1
October	22.1	12.1	19.3	26.8	17.0	26.7	82.4	71.2	72.1
November	13.5	2.9	10.6	16.0	4.8	14.7	84.7	60.5	72.5
December	15.4	6.4	10.5	16.9	9.8	16.1	91.1	65.9	65.1
<b>Total</b>	<b>239.3</b>	<b>88.6</b>	<b>128.0</b>	<b>279.5</b>	<b>125.0</b>	<b>195.4</b>	<b>85.6</b>	<b>70.9</b>	<b>65.5</b>



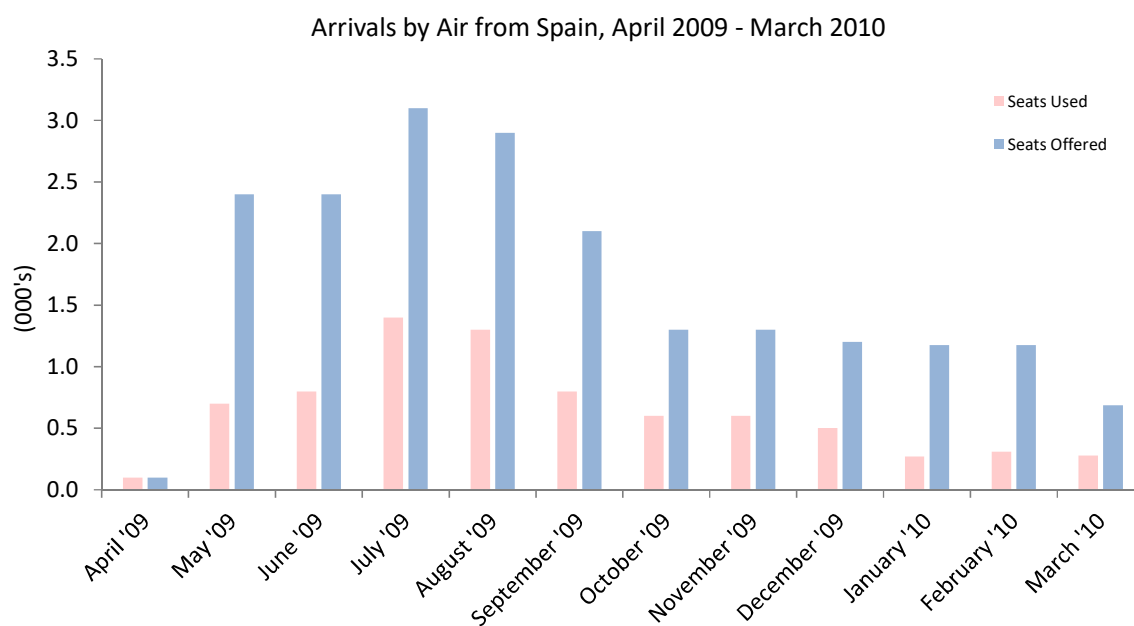
Notes:

- (i) The total yearly figures have been rounded off from the actual figures and need not necessarily equal the sum of the rounded off monthly figures.
- (ii) Coronavirus (COVID-19) restrictions on air travel are evident during 2020 and earlier part of 2021.

## 2: Arrivals by Air (Scheduled Flights)

**Table 2.08 Arrivals by Air from Spain (Scheduled Flights), 2008 - 2010**

	Seats used (000's)			Seats offered (000's)			Load factor (%)		
	2008	2009	2010	2008	2009	2010	2008	2009	2010
January	0.3	-	0.3	1.1	-	1.2	29.6	-	23.0
February	0.5	-	0.3	1.3	-	1.2	36.0	-	26.4
March	0.5	-	0.3	1.3	-	0.7	42.3	-	40.5
April	0.3	0.1	-	1.1	0.1	-	26.6	51.0	-
May	0.4	0.7	-	1.3	2.4	-	32.5	31.8	-
June	0.5	0.8	-	1.0	2.4	-	53.5	35.1	-
July	0.7	1.4	-	1.1	3.1	-	63.4	45.9	-
August	0.8	1.3	-	1.4	2.9	-	57.0	44.8	-
September	0.6	0.8	-	1.1	2.1	-	49.7	38.8	-
October	-	0.6	-	-	1.3	-	-	47.8	-
November	-	0.6	-	-	1.3	-	-	49.6	-
December	-	0.5	-	-	1.2	-	-	42.9	-
<b>Total</b>	<b>4.7</b>	<b>6.9</b>	<b>0.9</b>	<b>10.7</b>	<b>16.6</b>	<b>3.0</b>	<b>43.3</b>	<b>41.5</b>	<b>28.3</b>

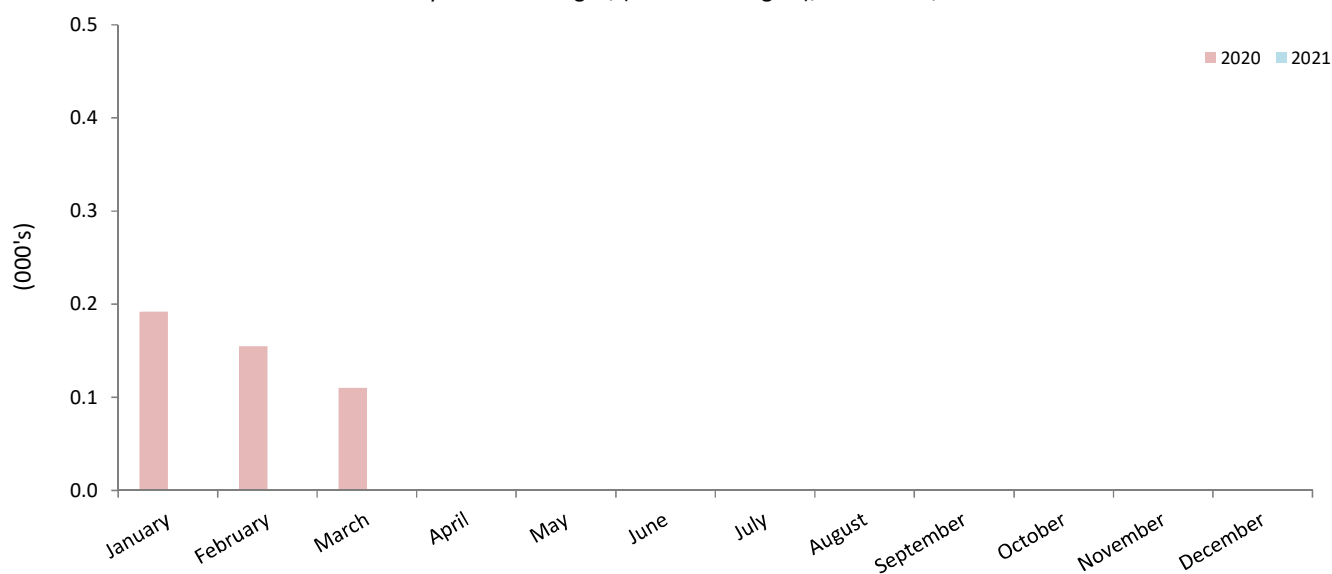


## 2: Arrivals by Air (Scheduled Flights)

**Table 2.09 Arrivals by Air from Tangier (Scheduled Flights), 2018 - 2021**

	Seats used (000's)				Seats offered (000's)				Load factor (%)			
	2018	2019	2020	2021	2018	2019	2020	2021	2018	2019	2020	2021
January	0.2	0.2	0.2	-	0.6	0.6	0.6	-	28.1	28.1	30.5	-
February	0.2	0.2	0.2	-	0.6	0.6	0.6	-	30.0	30.0	27.7	-
March	0.2	0.2	0.1	-	0.6	0.6	0.4	-	31.9	31.9	31.4	-
April	0.3	0.2	-	-	0.6	0.6	-	-	43.8	43.8	-	-
May	0.2	0.2	-	-	0.6	0.6	-	-	31.0	31.0	-	-
June	0.2	0.2	-	-	0.6	0.6	-	-	34.1	34.1	-	-
July	0.2	0.2	-	-	0.6	0.6	-	-	36.1	36.1	-	-
August	0.3	0.3	-	-	0.6	0.6	-	-	50.0	50.0	-	-
September	0.3	0.3	-	-	0.6	0.6	-	-	46.6	46.6	-	-
October	0.2	0.2	-	-	0.5	0.6	-	-	36.1	36.1	-	-
November	0.1	0.2	-	-	0.6	0.6	-	-	42.5	42.5	-	-
December	0.2	0.2	-	-	0.6	0.6	-	-	32.3	32.3	-	-
<b>Total</b>	<b>2.6</b>	<b>2.6</b>	<b>0.5</b>	<b>-</b>	<b>7.0</b>	<b>7.0</b>	<b>1.5</b>	<b>-</b>	<b>44.1</b>	<b>36.8</b>	<b>29.7</b>	<b>-</b>

Arrivals by Air from Tangier, (Scheduled Flights), Seats Used, 2020 - 2021



## Note:

(i) Flights to and from Tangier were suspended in April 2020 due to the coronavirus (COVID-19) global pandemic and did not resume during 2021.

## 3: Departures by Air (Scheduled Flights)

**Table 3.01 Departures by Air to U.K. (Scheduled Flights), 1997 - 1999**

	Seats used (000's)			Seats offered (000's)			Load factor (%)					
	1997	1998	1999	1997	1998	1999	1997		1998		1999	
							(i)	(ii)	(i)	(ii)	(i)	(ii)
January	4.7	6.0	6.3	6.8	9.5	8.5	68.5 (67.4)	63.1 (62.7)	74.1 (73.9)			
February	5.1	5.3	5.7	6.4	8.7	7.5	79.4 (78.3)	60.7 (60.2)	75.1 (74.3)			
March	5.2	6.7	7.0	6.8	9.9	8.5	76.4 (75.5)	67.9 (67.9)	82.8 (82.7)			
April	6.1	8.2	8.7	6.7	10.0	9.8	90.1 (89.7)	81.9 (81.7)	89.0 (88.5)			
May	7.7	8.0	8.9	9.6	11.2	12.5	79.8 (79.2)	71.3 (70.9)	71.0 (71.0)			
June	7.9	8.1	10.0	9.5	10.8	11.6	83.2 (83.0)	74.6 (74.2)	86.3 (86.3)			
July	7.5	7.7	9.4	9.7	10.3	12.5	77.0 (76.7)	74.5 (74.3)	75.7 (75.7)			
August	8.7	9.9	9.6	9.5	11.1	11.4	91.7 (91.4)	89.5 (89.4)	84.7 (84.7)			
September	8.8	9.2	10.2	10.5	10.4	11.8	83.8 (83.5)	88.5 (88.4)	86.3 (86.3)			
October	8.6	8.9	9.0	9.6	11.0	11.8	90.0 (89.6)	80.5 (80.3)	76.4 (76.4)			
November	6.5	7.1	7.4	9.2	8.3	10.0	70.3 (70.0)	84.9 (84.4)	74.4 (74.4)			
December	4.7	5.0	5.1	10.1	7.6	10.6	46.3 (46.1)	66.2 (65.5)	48.0 (47.9)			
<b>Total</b>	<b>81.5</b>	<b>90.1</b>	<b>97.4</b>	<b>104.4</b>	<b>119.0</b>	<b>126.5</b>	<b>78.1 (77.6)</b>	<b>75.7(75.4)</b>	<b>77.0 (76.9)</b>			

**Table 3.02 Departures by Air to U.K. (Scheduled Flights), 2000 - 2002**

	Seats used (000's)			Seats offered (000's)			Load factor (%)					
	2000	2001	2002	2000	2001	2002	2000		2001		2002	
							(i)	(ii)	(i)	(ii)	(i)	(ii)
January	6.5	6.6	6.4	11.1	9.4	9.5	58.8 (58.7)	70.2 (70.2)	67.7 (67.7)			
February	6.0	6.6	7.0	9.8	8.4	8.9	61.5 (61.4)	78.9 (78.9)	78.4 (78.4)			
March	8.0	7.9	8.4	10.6	9.8	11.1	75.2 (74.9)	81.0 (81.0)	75.7 (75.7)			
April	9.1	9.4	9.3	10.1	10.6	10.7	89.4 (89.3)	87.9 (87.9)	86.5 (86.5)			
May	9.9	10.2	9.4	13.3	13.3	14.1	74.5 (74.5)	76.7 (76.7)	66.5 (66.5)			
June	10.5	11.0	10.5	12.4	12.9	13.3	84.9 (84.8)	85.7 (85.7)	79.1 (79.1)			
July	9.8	10.3	10.8	13.4	13.5	14.8	73.0 (72.9)	76.0 (76.0)	72.9 (72.9)			
August	10.6	11.5	13.1	12.7	13.4	14.5	83.6 (83.5)	85.4 (85.4)	90.5 (90.5)			
September	11.7	11.1	12.6	12.8	12.8	13.6	91.4 (91.2)	86.6 (86.6)	92.7 (92.7)			
October	11.1	11.3	11.7	13.2	13.5	14.4	84.2 (84.1)	83.9 (83.9)	81.3 (81.3)			
November	7.5	8.5	8.6	9.2	10.7	10.7	82.1 (82.0)	79.9 (79.9)	80.6 (80.6)			
December	5.7	6.0	6.2	9.3	9.5	10.5	61.3 (60.8)	63.2 (63.2)	58.8 (58.8)			
<b>Total</b>	<b>106.6</b>	<b>110.5</b>	<b>114.0</b>	<b>138.1</b>	<b>137.9</b>	<b>146.1</b>	<b>77.2 (77.1)</b>	<b>80.1 (80.1)</b>	<b>78.0 (78.0)</b>			

Notes:

(i) Passenger load factor.

(ii) Revenue load factor.

## 3: Departures by Air (Scheduled Flights)

**Table 3.03 Departures by Air to U.K. (Scheduled Flights), 2003 - 2005**

	Seats used (000's)			Seats offered (000's)			Load factor (%)					
	2003	2004	2005	2003	2004	2005	2003		2004		2005	
							(i)	(ii)	(i)	(ii)	(i)	(ii)
January	7.5	8.7	11.9	11.4	12.4	15.8	66.2 (66.2)	70.0 (69.9)	75.4 (75.4)			
February	7.3	9.1	10.2	9.3	11.9	14.4	77.8 (77.8)	76.2 (76.2)	70.8 (70.8)			
March	10.1	11.6	11.8	13.2	15.4	16.6	76.6 (76.6)	75.3 (75.3)	71.1 (71.1)			
April	10.5	13.0	14.4	12.9	16.7	17.6	81.1 (81.1)	77.7 (77.7)	81.9 (81.9)			
May	12.0	12.3	14.4	16.1	20.2	21.1	74.7 (74.6)	61.0 (61.0)	68.8 (68.8)			
June	12.8	15.1	17.2	15.4	19.5	20.5	83.3 (83.3)	77.6 (77.6)	83.7 (83.7)			
July	12.0	14.9	16.3	16.1	20.0	21.1	74.7 (74.6)	74.2 (74.2)	77.5 (77.5)			
August	14.6	17.9	18.8	16.1	20.2	21.2	91.0 (91.0)	88.5 (88.5)	88.7 (88.7)			
September	13.7	17.1	19.0	15.5	19.6	20.4	88.1 (88.1)	87.2 (87.2)	92.8 (92.8)			
October	12.9	15.4	17.5	15.9	20.3	20.9	81.0 (80.9)	75.8 (75.8)	83.8 (83.8)			
November	10.9	12.6	12.6	14.1	15.2	16.6	77.4 (77.4)	83.1 (83.1)	75.8 (75.8)			
December	8.5	9.8	9.6	13.8	15.0	15.1	61.6 (61.6)	64.9 (64.9)	63.3 (63.3)			
<b>Total</b>	<b>132.9</b>	<b>157.3</b>	<b>173.7</b>	<b>169.8</b>	<b>206.4</b>	<b>221.4</b>	<b>78.2 (78.2)</b>	<b>76.2 (76.2)</b>	<b>78.5 (78.5)</b>			

**Table 3.04 Departures by Air to U.K. (Scheduled Flights), 2006 - 2008**

	Seats used (000's)			Seats offered (000's)			Load factor (%)					
	2006	2007	2008	2006	2007	2008	2006		2007		2008	
							(i)	(ii)	(i)	(ii)	(i)	
January	10.5	8.6	9.7	15.7	11.4	13.0	66.6 (66.6)	75.6 (75.6)	74.5			
February	10.6	7.9	8.5	14.8	10.8	10.4	72.1 (72.1)	73.0 (73.0)	81.7			
March	13.2	8.9	10.3	17.6	12.7	12.3	75.5 (75.5)	69.8 (69.8)	83.4			
April	15.5	10.9	15.8	17.8	13.9	18.3	87.0 (87.0)	78.2 (78.2)	86.3			
May	15.8	12.7	16.2	19.3	17.0	19.4	82.1 (82.1)	74.8 (74.8)	83.3			
June	17.7	14.0	16.4	19.8	16.2	18.8	89.3 (89.3)	86.1 (86.1)	87.2			
July	16.3	14.1	18.0	19.6	16.9	21.5	83.1 (83.1)	83.7 (83.7)	83.7			
August	15.9	14.0	19.6	17.6	16.2	21.3	90.4 (90.4)	86.1 (86.1)	91.8			
September	15.4	15.3	20.0	17.2	16.4	22.3	89.5 (89.5)	93.4 (93.4)	89.8			
October	14.5	14.9	18.9	17.4	17.2	22.3	83.7 (83.7)	86.7 (86.7)	84.5			
November	10.5	12.0	15.8	11.6	13.2	19.4	90.0 (90.0)	91.1 (91.1)	81.2			
December	9.5	9.4	13.5	13.6	12.7	18.5	70.0 (70.0)	73.6 (73.6)	72.9			
<b>Total</b>	<b>165.4</b>	<b>142.7</b>	<b>182.5</b>	<b>201.9</b>	<b>174.7</b>	<b>217.6</b>	<b>81.9 (81.9)</b>	<b>81.7 (81.7)</b>	<b>83.9</b>			

## Notes:

(i) Passenger load factor.

(ii) Revenue load factor.

## 3: Departures by Air (Scheduled Flights)

Table 3.05 Departures by Air to U.K. (Scheduled Flights), 2009 - 2011

	Seats used (000's)			Seats offered (000's)			Load factor (%)		
	2009	2010	2011	2009	2010	2011	2009	2010	2011
							(i)	(i)	(i)
January	12.5	9.4	10.3	15.6	13.0	14.0	80.0	73.4	73.4
February	12.2	9.1	10.1	15.4	11.6	13.4	79.1	75.3	75.3
March	15.0	10.9	12.5	18.7	14.0	16.1	80.3	77.9	77.9
April	16.6	9.1	14.8	19.3	11.5	18.5	85.9	80.3	80.3
May	16.5	13.0	16.4	18.8	15.7	21.3	87.7	77.2	77.2
June	17.0	14.2	18.9	18.5	15.7	22.3	91.9	84.7	84.7
July	16.6	14.4	19.6	19.0	16.2	23.9	87.5	81.9	81.9
August	17.4	15.5	22.1	18.8	16.2	24.1	92.7	92.3	92.3
September	17.3	15.6	21.4	18.4	16.4	22.4	93.9	95.5	95.5
October	16.4	16.5	18.8	18.4	18.2	20.8	89.1	90.3	90.3
November	12.0	13.2	15.5	14.1	15.6	16.8	85.2	91.8	91.8
December	9.7	10.3	13.1	13.1	13.7	16.7	74.1	78.5	78.5
<b>Total</b>	<b>179.1</b>	<b>151.1</b>	<b>193.5</b>	<b>208.1</b>	<b>178.0</b>	<b>230.1</b>	<b>86.1</b>	<b>84.8</b>	<b>84.1</b>

Table 3.06 Departures by Air to U.K. (Scheduled Flights), 2012 - 2014

	Seats used (000's)			Seats offered (000's)			Load factor (%)		
	2012	2013	2014	2012	2013	2014	2012	2013	2014
January	12.4	10.1	13.4	15.8	13.5	18.3	78.3	74.9	73.0
February	12.9	11.8	13.4	15.0	13.8	17.6	86.3	84.9	76.0
March	14.7	13.3	16.0	17.1	16.3	19.7	86.1	81.7	81.2
April	16.9	14.7	16.8	20.2	17.4	19.5	83.8	84.0	86.4
May	15.8	15.5	16.6	19.0	19.5	20.4	83.2	79.6	81.4
June	18.0	18.2	18.0	20.1	20.7	21.2	89.6	87.7	84.9
July	19.3	19.5	19.9	21.9	22.8	23.8	88.4	85.3	83.7
August	20.5	21.4	22.4	21.8	22.8	24.4	94.3	93.9	91.5
September	19.0	21.1	21.5	19.7	22.8	23.2	96.9	92.4	92.7
October	18.4	18.2	20.6	19.7	22.3	22.2	93.4	81.5	92.8
November	13.6	15.6	16.6	15.0	19.0	19.5	90.4	82.2	84.7
December	11.9	14.0	14.0	16.0	16.5	18.9	74.5	85.0	73.9
<b>Total</b>	<b>193.6</b>	<b>193.4</b>	<b>209.1</b>	<b>221.2</b>	<b>227.6</b>	<b>248.8</b>	<b>87.5</b>	<b>85.0</b>	<b>84.1</b>

Note:

(i) Passenger load factor.



## 3: Departures by Air (Scheduled Flights)

**Table 3.07 Departures by Air to U.K. (Scheduled Flights), 2015 - 2016**

	Seats used (000's)		Seats offered (000's)		Load factor (%)	
	2015	2016	2015	2016	2015	2016
January	12.6	15.0	16.3	19.4	77.1	77.6
February	12.3	14.7	15.5	18.9	79.8	78.0
March	14.8	17.6	17.7	23.5	83.5	75.0
April	16.7	21.1	19.5	25.8	85.6	82.0
May	18.8	23.6	22.9	31.6	82.1	74.7
June	20.9	25.2	23.8	30.5	87.7	82.6
July	21.6	27.5	25.2	34.7	85.7	79.4
August	23.9	30.7	25.7	35.4	92.8	86.9
September	23.5	30.0	24.6	33.0	95.6	90.9
October	22.7	28.2	24.9	32.6	91.0	86.4
November	18.0	20.4	20.5	24.6	87.5	82.7
December	14.3	18.4	19.9	25.3	71.7	72.5
<b>Total</b>	<b>220.0</b>	<b>272.6</b>	<b>256.6</b>	<b>335.3</b>	<b>85.7</b>	<b>81.3</b>

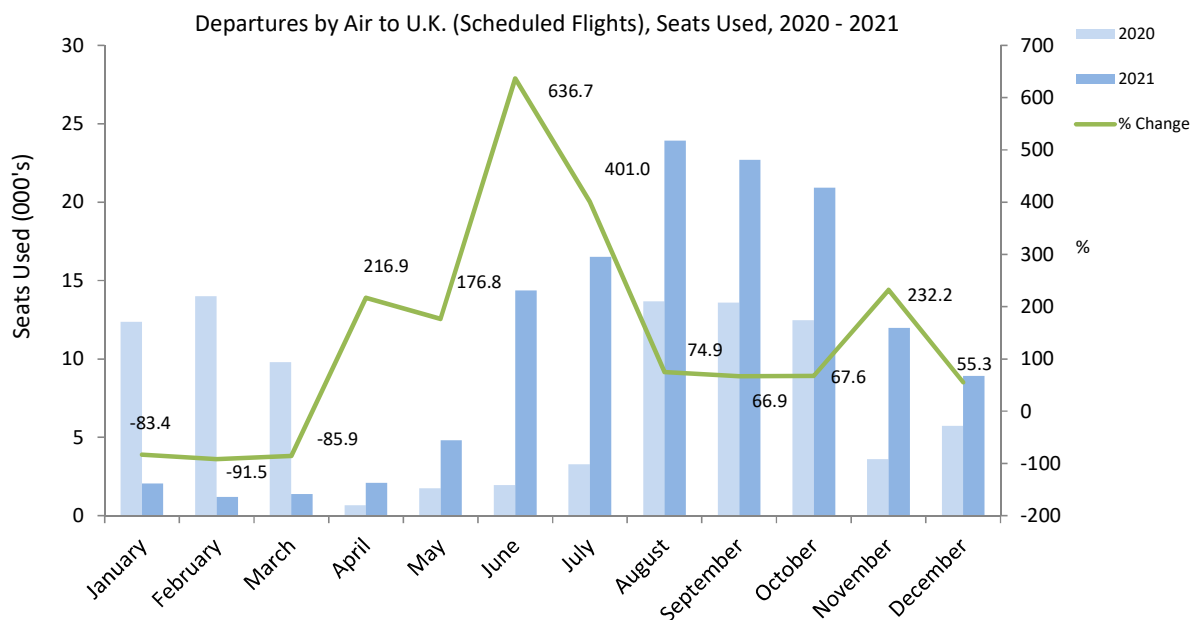
**Table 3.08 Departures by Air to U.K. (Scheduled Flights), 2017 - 2018**

	Seats used (000's)		Seats offered (000's)		Load factor (%)	
	2017	2018	2017	2018	2017	2018
January	17.4	10.9	22.2	12.0	78.4	90.4
February	17.7	12.6	22.0	13.7	80.3	91.5
March	21.6	13.1	27.2	15.2	79.4	85.7
April	28.3	18.6	32.5	19.8	86.9	93.7
May	28.0	19.2	32.6	21.0	85.8	91.5
June	29.0	21.9	32.1	22.9	90.1	95.4
July	30.3	22.6	35.3	25.2	85.7	89.9
August	33.2	24.6	35.3	25.7	94.0	95.4
September	32.1	23.7	34.3	25.0	93.8	94.7
October	20.2	19.9	21.2	21.1	95.6	94.6
November	13.2	15.3	13.6	18.3	96.8	83.4
December	11.8	14.9	13.5	19.5	86.9	76.3
<b>Total</b>	<b>282.6</b>	<b>217.0</b>	<b>321.8</b>	<b>239.5</b>	<b>87.8</b>	<b>90.6</b>

3: Departures by Air (Scheduled Flights)

**Table 3.09 Departures by Air to U.K. (Scheduled Flights), 2019 - 2021**

	Seats used (000's)			Seats offered (000's)			Load factor (%)		
	2019	2020	2021	2019	2020	2021	2019	2020	2021
January	13.5	12.4	2.1	16.8	13.8	4.5	80.7	90.0	45.8
February	14.9	14.0	1.2	18.1	16.0	1.8	82.6	87.7	66.9
March	17.4	9.8	1.4	20.2	13.7	2.4	85.8	71.5	57.3
April	21.0	0.7	2.1	24.4	2.6	3.5	86.0	25.5	60.8
May	23.2	1.7	4.8	28.2	3.1	9.8	82.2	56.5	49.0
June	24.9	2.0	14.4	27.7	2.9	22.3	89.9	67.4	64.5
July	23.4	3.3	16.5	27.7	4.6	30.0	84.6	72.2	54.9
August	26.5	13.7	23.9	28.5	19.2	32.9	92.9	71.0	72.6
September	25.9	13.6	22.7	28.0	17.9	31.0	92.4	76.1	73.1
October	23.7	12.5	20.9	26.8	17.0	26.7	88.1	73.4	78.2
November	14.9	3.6	12.0	16.0	4.8	14.7	93.0	75.5	81.6
December	14.0	5.7	8.9	16.9	9.8	16.1	82.8	58.7	55.5
<b>Total</b>	<b>243.1</b>	<b>92.9</b>	<b>130.8</b>	<b>279.2</b>	<b>125.2</b>	<b>195.7</b>	<b>87.1</b>	<b>74.2</b>	<b>66.9</b>



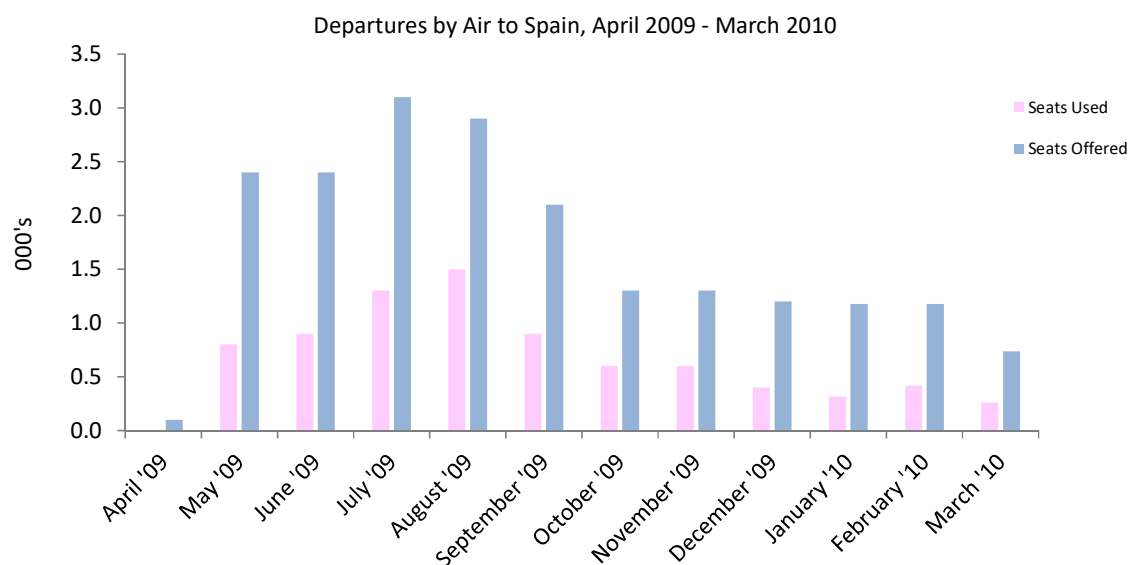
Note:

(i) Coronavirus (COVID-19) restrictions on air travel are evident during 2020 and earlier part of 2021.

3: Departures by Air (Scheduled Flights)

**Table 3.10 Departures by Air to Spain (Scheduled Flights), 2008 - 2010**

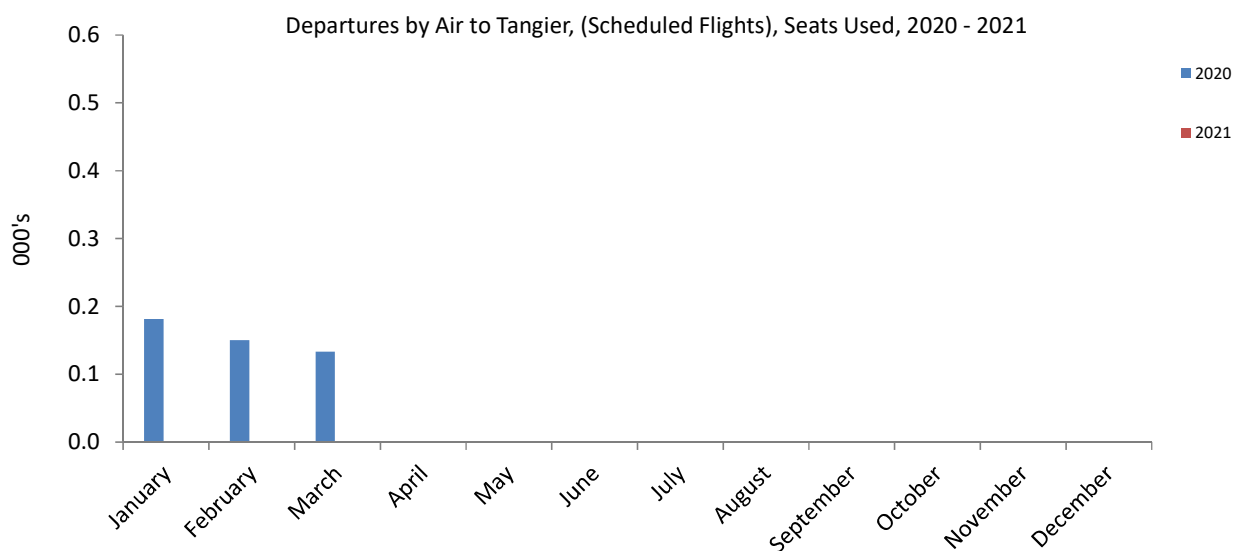
	Seats used (000's)			Seats offered (000's)			Load factor (%)		
	2008	2009	2010	2008	2009	2010	2008	2009	2010
January	0.4	-	0.3	1.1	-	1.2	35.7	-	27.0
February	0.4	-	0.4	1.3	-	1.2	34.5	-	35.5
March	0.6	-	0.3	1.3	-	0.7	47.2	-	35.5
April	0.3	-	-	1.1	0.1	-	25.1	29.6	-
May	0.4	0.8	-	1.3	2.4	-	34.0	33.4	-
June	0.6	0.9	-	1.0	2.4	-	56.7	37.4	-
July	0.6	1.3	-	1.1	3.1	-	55.8	41.5	-
August	0.9	1.5	-	1.4	2.9	-	67.3	50.5	-
September	0.5	0.9	-	1.1	2.1	-	45.7	42.2	-
October	-	0.6	-	-	1.3	-	-	44.1	-
November	-	0.6	-	-	1.3	-	-	47.3	-
December	-	0.4	-	-	1.2	-	-	36.3	-
<b>Total</b>	<b>4.8</b>	<b>6.9</b>	<b>1.0</b>	<b>10.7</b>	<b>16.6</b>	<b>3.1</b>	<b>44.8</b>	<b>41.7</b>	<b>32.2</b>



## 3: Departures by Air (Scheduled Flights)

**Table 3.11 Departures by Air to Tangier (Scheduled Flights), 2018 - 2021**

	Seats used (000's)				Seats offered (000's)				Load factor (%)			
	2018	2019	2020	2021	2018	2019	2020	2021	2018	2019	2020	2021
January	0.2	0.1	0.2	-	0.6	0.6	0.6	-	20.3	20.3	28.7	-
February	0.2	0.2	0.2	-	0.6	0.6	0.6	-	26.8	26.8	26.8	-
March	0.3	0.2	0.1	-	0.6	0.6	0.4	-	31.0	31.0	38.0	-
April	0.2	0.3	-	-	0.6	0.6	-	-	46.1	46.1	-	-
May	0.2	0.2	-	-	0.6	0.6	-	-	28.3	28.3	-	-
June	0.2	0.2	-	-	0.6	0.6	-	-	31.6	31.6	-	-
July	0.3	0.2	-	-	0.6	0.6	-	-	37.0	37.0	-	-
August	0.4	0.3	-	-	0.6	0.6	-	-	49.0	49.0	-	-
September	0.2	0.2	-	-	0.6	0.6	-	-	32.1	32.1	-	-
October	0.2	0.3	-	-	0.5	0.6	-	-	44.6	44.6	-	-
November	0.2	0.2	-	-	0.6	0.6	-	-	31.4	31.4	-	-
December	0.3	0.2	-	-	0.6	0.6	-	-	42.3	42.3	-	-
<b>Total</b>	<b>2.7</b>	<b>2.4</b>	<b>0.5</b>	<b>-</b>	<b>7.0</b>	<b>7.0</b>	<b>1.5</b>	<b>-</b>	<b>38.1</b>	<b>34.9</b>	<b>30.1</b>	<b>-</b>

**Note:**

(i) Flights to and from Tangier were suspended in April 2020 due to the coronavirus (COVID-19) global pandemic and did not resume during 2021.

## 4: Arrivals by Air (Charter Flights)

**Table 4.01 Arrivals by Air (Charter Flights), 2006 - 2007, 2009**

	Seats used (000's)			Seats offered (000's)			Load factor (%)		
	2006	2007	2009	2006	2007	2009	2006	2007	2009
January	-	-	-	-	-	-	-	-	-
February	-	-	-	-	0.1	-	-	32.8	-
March	-	-	-	-	-	-	-	-	-
April	-	-	-	-	0.1	-	-	50.0	-
May	-	-	-	-	0.4	-	-	-	-
June	0.2	-	-	0.2	0.2	-	69.4	-	-
July	0.2	0.4	-	0.3	0.5	-	84.4	67.9	-
August	0.2	-	0.2	0.2	-	0.2	97.3	-	83.1
September	-	-	-	-	0.2	-	-	-	-
October	-	-	-	-	-	-	-	-	-
November	-	-	-	-	0.2	-	-	20.6	-
December	-	-	-	-	0.1	-	-	-	-
<b>Total</b>	<b>0.6</b>	<b>0.5</b>	<b>0.2</b>	<b>0.7</b>	<b>1.8</b>	<b>0.2</b>	<b>83.8</b>	<b>25.0</b>	<b>83.1</b>

**Table 4.02 Arrivals by Air (Charter Flights), 2010, 2014 - 2015**

	Seats used (000's)			Seats offered (000's)			Load factor (%)		
	2010	2014	2015	2010	2014	2015	2010	2014	2015
January	-	-	-	-	-	-	-	-	-
February	-	-	-	-	-	-	-	-	-
March	-	-	-	-	-	-	-	-	-
April	-	0.1	-	-	0.2	-	-	46.2	-
May	0.2	0.1	-	0.4	0.5	-	56.7	24.5	-
June	-	0.1	0.2	-	0.1	0.3	-	40.7	84.0
July	-	-	-	-	0.1	-	-	16.4	-
August	-	-	-	-	-	-	-	-	-
September	0.3	-	-	0.5	-	-	67.3	-	-
October	-	-	-	-	-	-	-	-	-
November	-	-	-	-	-	-	-	-	-
December	-	-	-	-	-	-	-	-	-
<b>Total</b>	<b>0.5</b>	<b>0.3</b>	<b>0.2</b>	<b>0.8</b>	<b>1.0</b>	<b>0.3</b>	<b>62.6</b>	<b>30.3</b>	<b>84.0</b>

## 4: Arrivals by Air (Charter Flights)

**Table 4.03 Arrivals by Air (Charter Flights), 2016 - 2018**

	Seats used (000's)			Seats offered (000's)			Load factor (%)		
	2016	2017	2018	2016	2017	2018	2016	2017	2018
January	-	-	-	-	-	-	-	-	-
February	-	-	-	-	-	-	-	-	-
March	-	-	-	-	-	-	-	-	-
April	-	-	-	-	-	-	-	-	-
May	0.1	-	-	0.2	-	-	90.4	-	-
June	-	-	-	-	-	-	-	-	-
July	-	0.2	-	0.1	0.2	-	66.0	100.0	-
August	-	-	-	-	-	-	-	-	-
September	-	-	0.0	-	-	0.5	-	-	9.0
October	-	-	0.0	-	-	0.3	-	-	10.3
November	-	-	0.0	-	-	0.3	-	-	10.6
December	-	-	-	-	-	-	-	-	-
<b>Total</b>	<b>0.2</b>	<b>0.2</b>	<b>0.1</b>	<b>0.2</b>	<b>0.2</b>	<b>1.2</b>	<b>84.5</b>	<b>100.0</b>	<b>9.8</b>

**Table 4.04 Arrivals by Air (Charter Flights), 2019 - 2021**

	Seats used (000's)			Seats offered (000's)			Load factor (%)		
	2019	2020	2021	2019	2020	2021	2019	2020	2021
January	-	-	0.1	-	-	0.2	-	-	63.7
February	-	-	0.1	-	-	0.2	-	-	51.8
March	0.1	-	0.3	0.1	-	0.8	62.0	-	33.7
April	-	-	-	-	-	-	-	-	-
May	-	-	-	-	-	-	-	-	-
June	0.0	0.0	0.0	0.1	0.1	0.3	36.0	43.8	14.2
July	0.7	0.1	0.1	0.9	0.3	0.4	81.6	26.7	20.3
August	-	0.1	0.1	-	0.5	0.7	-	22.4	12.6
September	0.0	0.2	0.2	0.1	0.7	0.6	46.3	23.0	29.5
October	0.0	0.2	0.1	0.1	0.8	0.7	37.0	24.8	18.3
November	-	0.1	0.2	-	0.3	0.9	-	24.0	21.6
December	-	0.0	0.0	-	0.5	0.3	-	10.4	18.5
<b>Total</b>	<b>0.9</b>	<b>0.7</b>	<b>1.2</b>	<b>1.3</b>	<b>3.1</b>	<b>4.8</b>	<b>70.7</b>	<b>22.5</b>	<b>24.8</b>

Note:

(i) As from 2019, passengers arriving on a charter flight need not necessarily mean they used the same mode of transport to depart from Gibraltar.

## 5: Departures by Air (Charter Flights)

**Table 5.01 Departures by Air (Charter Flights), 2006 - 2007, 2009**

	Seats used (000's)			Seats offered (000's)			Load factor (%)		
	2006	2007	2009	2006	2007	2009	2006	2007	2009
January	-	-	-	-	-	-	-	-	-
February	-	-	-	-	0.1	-	-	32.8	-
March	-	-	-	-	-	-	-	-	-
April	-	-	-	-	0.1	-	-	50.0	-
May	-	0.2	-	-	0.4	-	-	59.6	-
June	0.2	0.2	-	0.2	0.2	-	95.0	100.0	-
July	0.2	0.2	-	0.3	0.5	-	85.8	42.0	-
August	0.1	-	0.2	0.2	-	0.2	63.5	78.6	88.6
September	-	0.2	-	-	0.2	-	-	73.5	-
October	-	-	-	-	0.0	-	-	-	-
November	-	-	-	-	0.2	-	-	18.6	-
December	-	0.1	-	-	0.1	-	-	73.6	-
<b>Total</b>	<b>0.6</b>	<b>1.0</b>	<b>0.2</b>	<b>0.7</b>	<b>1.8</b>	<b>0.2</b>	<b>81.8</b>	<b>56.0</b>	<b>88.6</b>

**Table 5.02 Departures by Air (Charter Flights), 2010, 2014 - 2015**

	Seats used (000's)			Seats offered (000's)			Load factor (%)		
	2010	2014	2015	2010	2014	2015	2010	2014	2015
January	-	-	-	-	-	-	-	-	-
February	-	-	-	-	-	-	-	-	-
March	-	-	-	-	-	-	-	-	-
April	-	0.1	-	-	0.2	-	-	43.8	-
May	0.2	0.1	-	0.4	0.5	-	65.3	19.0	-
June	-	0.1	-	-	0.1	-	-	46.4	80.0
July	-	-	0.2	-	0.1	0.2	-	12.9	84.8
August	-	-	-	-	-	-	-	-	-
September	0.3	-	-	0.5	-	-	73.4	-	-
October	-	-	-	-	-	-	-	-	-
November	-	-	-	-	-	-	-	-	-
December	-	-	-	-	-	-	-	-	-
<b>Total</b>	<b>0.6</b>	<b>0.3</b>	<b>0.2</b>	<b>0.8</b>	<b>1.0</b>	<b>0.3</b>	<b>69.8</b>	<b>27.3</b>	<b>84.0</b>

## 5: Departures by Air (Charter Flights)

**Table 5.03 Departures by Air (Charter Flights), 2016 - 2018**

	Seats used (000's)			Seats offered (000's)			Load factor (%)		
	2016	2017	2018	2016	2017	2018	2016	2017	2018
January	-	-	-	-	-	-	-	-	-
February	-	-	-	-	-	-	-	-	-
March	-	-	-	-	-	-	-	-	-
April	-	-	-	-	-	-	-	-	-
May	-	-	-	0.2	-	-	-	-	-
June	-	-	-	-	-	-	-	-	-
July	0.0	0.2	-	0.1	0.2	-	66.0	100.0	-
August	-	-	-	-	-	-	-	-	-
September	-	-	0.4	-	-	0.5	-	-	77.8
October	-	-	0.0	-	-	0.3	-	-	10.3
November	-	-	0.0	-	-	0.3	-	-	10.6
December	-	-	-	-	-	-	-	-	-
<b>Total</b>	<b>0.0</b>	<b>0.2</b>	<b>0.5</b>	<b>0.2</b>	<b>0.2</b>	<b>1.2</b>	<b>16.0</b>	<b>100.0</b>	<b>39.0</b>

**Table 5.04 Departures by Air (Charter Flights), 2019 - 2021**

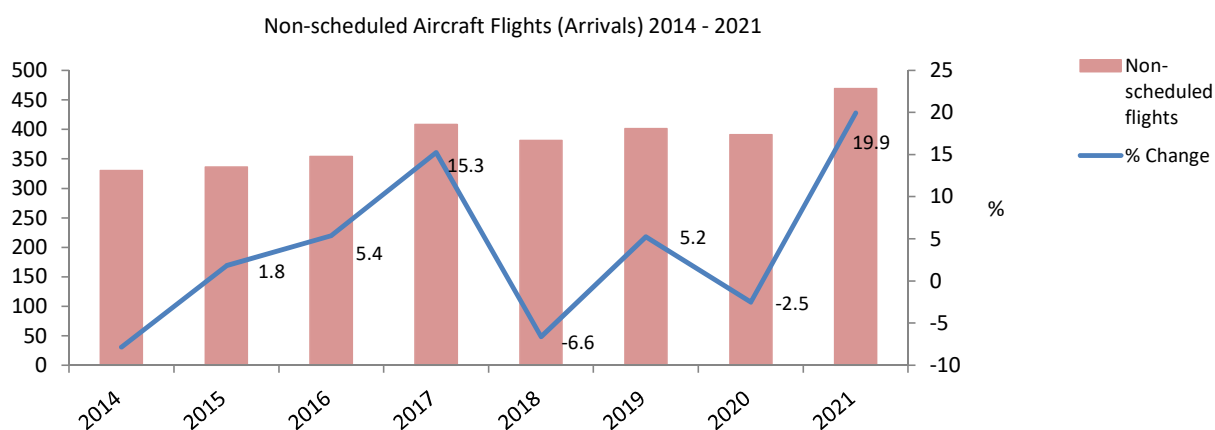
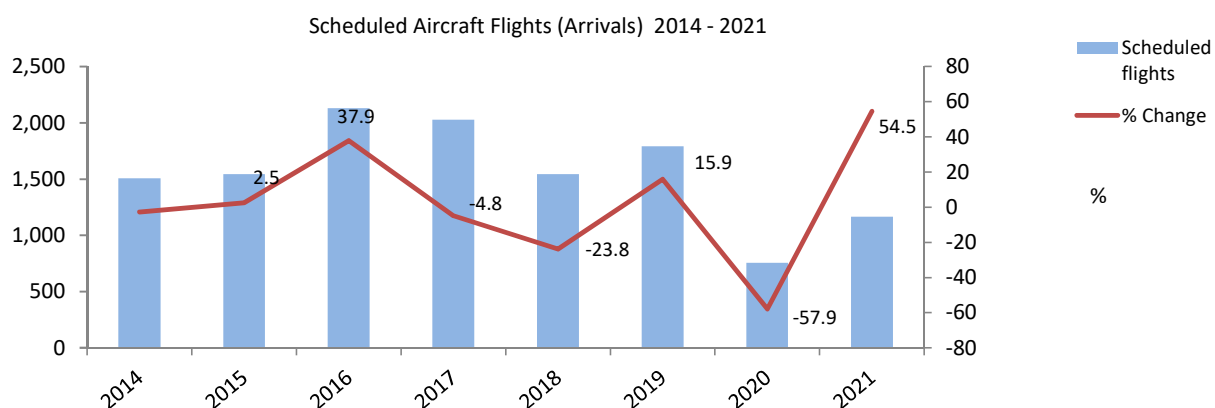
	Seats used (000's)			Seats offered (000's)			Load factor (%)		
	2019	2020	2021	2019	2020	2021	2019	2020	2021
January	-	-	0.1	-	-	0.2	-	-	33.9
February	-	-	0.0	-	-	0.2	-	-	22.4
March	0.1	-	0.3	0.1	-	0.8	62.0	-	33.4
April	-	-	-	-	-	0.0	-	-	-
May	-	0.3	-	-	0.4	0.0	-	88.9	-
June	0.1	-	0.0	0.1	0.1	0.3	72.0	-	14.2
July	0.5	0.1	0.1	0.6	0.3	0.4	83.8	38.0	20.3
August	0.1	0.1	0.1	0.1	0.5	0.7	80.8	22.4	18.5
September	0.2	0.2	0.1	0.3	0.7	0.6	56.1	23.0	23.9
October	0.0	0.3	0.1	0.1	0.8	0.7	37.0	31.3	11.7
November	-	0.1	0.3	-	0.3	0.9	-	24.0	28.5
December	-	0.2	0.0	-	0.5	0.3	-	44.0	18.5
<b>Total</b>	<b>0.9</b>	<b>1.2</b>	<b>1.1</b>	<b>1.3</b>	<b>3.4</b>	<b>4.8</b>	<b>71.4</b>	<b>35.3</b>	<b>23.2</b>



6: Aircraft Arrivals

**Table 6.01 Aircraft Arrivals, 2014 - 2021**

Year	Scheduled flights	Non-scheduled flights <sup>(i)</sup>	Total flights
2014	1,507	330	<b>1,837</b>
2015	1,545	336	<b>1,881</b>
2016	2,130	354	<b>2,484</b>
2017	2,027	408	<b>2,435</b>
2018	1,545	381	<b>1,926</b>
2019	1,791	401	<b>2,192</b>
2020	754	391	<b>1,145</b>
2021	1,165	469	<b>1,634</b>



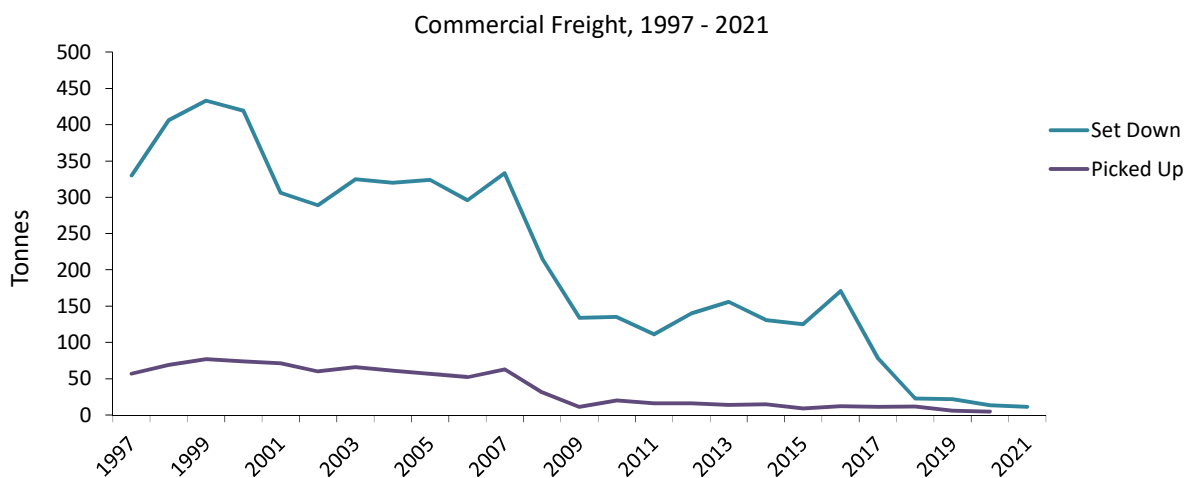
Notes:

- (i) Non-scheduled flights include commercial charters, business jets and light aircrafts.
- (ii) The impact of the coronavirus (COVID-19) global pandemic on air travel is evident in 2020 and 2021.

## 7: Commercial Freight

**Table 7.01 Commercial Freight, Set Down/Picked Up by Air, Gibraltar, 1997 - 2021**

Year	Set Down (000's kgs)	% Change	Picked Up (000's kgs)	% Change
1997	330	-	57	-
1998	406	23.0	69	21.1
1999	433	6.7	77	11.6
2000	419	-3.2	74	-3.9
2001	306	-27.0	71	-4.1
2002	289	-5.6	60	-15.5
2003	325	12.5	66	10.0
2004	320	-1.5	61	-7.6
2005	324	1.3	57	-6.6
2006	296	-8.6	52	-8.8
2007	333	12.5	63	21.2
2008	216	-35.1	31	-50.8
2009	134	-38.0	11	-64.5
2010	135	0.7	20	81.8
2011	111	-17.8	16	-20.0
2012	140	26.1	16	0.0
2013	156	11.4	14	-12.5
2014	131	-16.0	15	7.1
2015	125	-4.6	9	-40.0
2016	171	36.8	12	33.3
2017	78	-54.4	11	-8.3
2018	23	-70.5	12	5.7
2019	22	-4.4	6	-48.4
2020	13	-39.0	5	-20.0
2021	11	-15.6	5	1.5



Note:

Commercial freight includes from/to all destinations.